

## LEAK PROOF

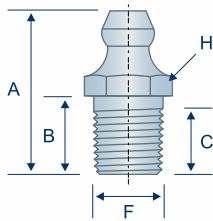
5,000 PSI

Leak proof fittings are designed for applications where the prevention of lubricant leakage is critical, such as in textile & food processing equipment. These fittings are also used in laboratory environments such as those found in pharmaceutical production facilities. The H1634Z3 has a steel ball check and brass insert that seals grease. The H1634BZ3 has a spring loaded surface ball check that seals debris from entering the fitting.

TECHNICAL DRAWINGS ARE APPROXIMATE ACTUAL SIZE

### H1650Z3

Straight Leak Proof  
1/8"-27 PTF SAE Short  
5,000 psi

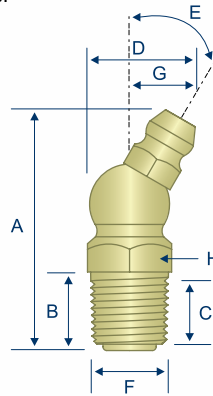


 1650  
 5045

WITHOUT  
SURFACE  
BALL CHECK

### H1692

30° Angle Leak Proof  
1/8"-27 NPTF  
5,000 psi

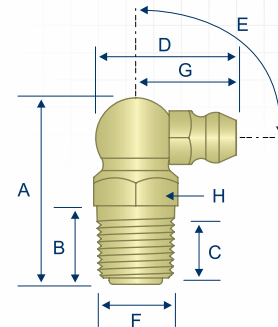


 1692

WITHOUT  
SURFACE  
BALL CHECK

### H1693

90° Angle Leak Proof  
1/8"-27 NPTF  
5,000 psi

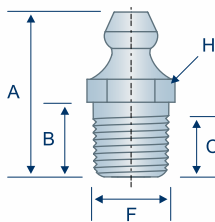


 1693

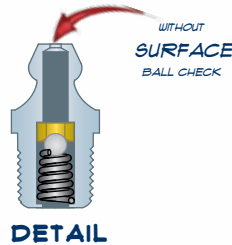
WITHOUT  
SURFACE  
BALL CHECK

### H1634Z3

Straight Leak Proof  
1/8"-27 PTF SAE Short  
10,000 psi

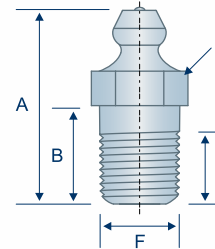


 1634

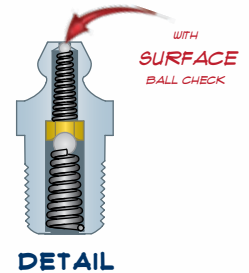


### H1634BZ3

Straight Leak Proof  
1/8"-27 PTF SAE Short  
10,000 psi



 1634-B  
 700506  
 JDI0510



10,000 PSI

Item #	Thread	Angle (E)	Max Back Pressure	Overall Length (A)	Shank Length (B)	Min. Thread Length (C)	Overall Width (D)	Thread Diameter (F)	Swing Clearance (G)	Hex (H)
H1650Z3	1/8"-27	Straight	5,000 psi	.84"	.38"	.27"	—	.39"	—	7/16"
H1692	1/8"-27	30°	5,000 psi	1.22"	.38"	.27"	.56"	.39"	.33"	7/16"
H1693	1/8"-27	90°	5,000 psi	.97"	.38"	.27"	.72"	.39"	.50"	7/16"
H1634Z3	1/8"-27	Straight	10,000 psi	.85"	.38"	.23"	—	.39"	—	7/16"
H1634BZ3	1/8"-27	Straight	10,000 psi	1.00"	.52"	.37"	—	.39"	—	7/16"

All manufacturer names and numbers are for cross reference identification purposes only. In no way are we implying that our parts were made by the manufacturers listed. Prices, materials, dimensions, tolerances, designs and grades subject to change without notice. © Huyett 2022