

STEP KEY

DESCRIPTION

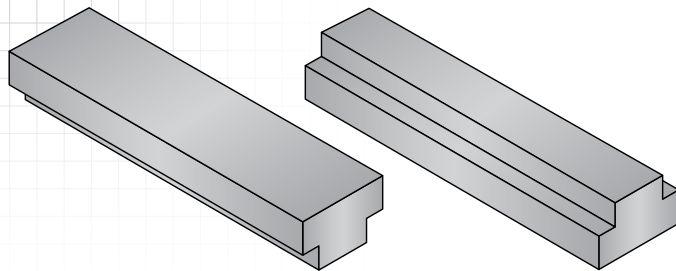
Step key stock is used when worn or damaged key ways have been repaired. Type 1 is designed for use in key ways of repaired gears, sprockets, pulleys, and other hub assembly components. Type 2 is designed for use in repaired shaft key ways.

HOW TO IDENTIFY

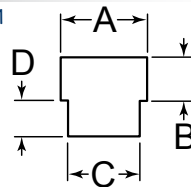
1. Measure width (A).
2. Measure width 2 (C).
3. Measure height (B).
4. Measure height 2 (D).
5. Find the part number in the chart on the next page.

TYPE 1

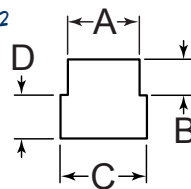
TYPE 2



TYPE 1



TYPE 2



PREFIX

MATERIAL/FINISH

SK	=	COLD FINISHED STEEL, ZINC CLEAR TRIVALENT
SKO	=	COLD FINISHED STEEL, ZINC CLEAR TRIVALENT, OVERSIZE
SKS	=	STAINLESS STEEL, PLAIN

Material/finish combinations may not be available in all sizes.

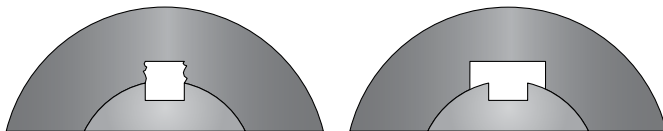
STEP KEY TOLERANCES



Tolerances for step key stock are dependent upon the material from which it is made. For material and tolerance information, contact sales@huyett.com or 785-392-3017.

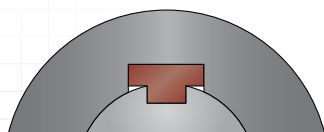
HOW TO USE STEP KEYS

TYPE 1



SIDEWALLS OF THE HUB ASSEMBLY KEY WAY ARE SEVERELY DAMAGED

THE KEY WAY IS BROACHED TO A LARGER SIZE TO REPAIR THE DAMAGED HUB



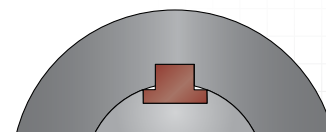
A TYPE 1 STEP KEY IS USED TO FILL THE MISMATCHED KEY WAYS

TYPE 2



SIDEWALLS OF THE SHAFT KEY WAY ARE SEVERELY DAMAGED

THE SHAFT KEY WAY IS BROACHED TO A LARGER SIZE TO REPAIR THE DAMAGED SHAFT



TO ACCOUNT FOR THE CURVATURE OF THE SHAFT A TYPE 2 STEP KEY IS USED TO FILL THE MISMATCHED KEY WAYS



STEP KEY

ITEM NUMBER	(A x C) SIZE	(A) WIDTH	(C) WIDTH 2	(B) HEIGHT	(D) HEIGHT 2	(E) LENGTH
-------------	--------------	-----------	-------------	------------	--------------	------------

Type 1

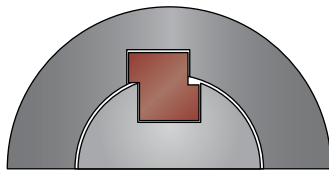
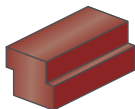
PREFIX01-1	3/16" x 1/8"	.1875" (3/16)	.1250" (1/8)	.0938" (3/32)	.0625" (1/16)	12.0000" (12)
PREFIX07-1	3/8" x 5/16"	.3750" (3/8)	.3125" (5/16)	.1875" (3/16)	.1250" (1/8)	12.0000" (12)
PREFIX08-1	3/8" x 5/16"	.3750" (3/8)	.3125" (5/16)	.1875" (3/16)	.1563" (5/32)	12.0000" (12)
PREFIX12-1	1/2" x 7/16"	.5000" (1/2)	.4375" (7/16)	.2500" (1/4)	.1563" (5/32)	12.0000" (12)
PREFIX17-1	5/8" x 3/8"	.6250" (5/8)	.3750" (3/8)	.3125" (5/16)	.1875" (3/16)	12.0000" (12)
PREFIX19-1	3/4" x 1/2"	.7500" (3/4)	.5000" (1/2)	.3750" (3/8)	.2500" (1/4)	12.0000" (12)
PREFIX20-1	3/4" x 5/8"	.7500" (3/4)	.6250" (5/8)	.3750" (3/8)	.1875" (3/16)	12.0000" (12)
PREFIX21-1	3/4" x 5/8"	.7500" (3/4)	.6250" (5/8)	.3750" (3/8)	.3125" (5/16)	12.0000" (12)
PREFIX22-1	3/4" x 11/16"	.7500" (3/4)	.6875" (11/16)	.3750" (3/8)	.2500" (1/4)	12.0000" (12)
PREFIX27-1	1" x 7/8"	1.0000" (1)	.8750" (7/8)	.5000" (1/2)	.4375" (7/16)	12.0000" (12)

Type 2

PREFIX02-2	3/16" x 1/4"	.1875" (3/16)	.2500" (1/4)	.0938" (3/32)	.0938" (3/32)	12.0000" (12)
PREFIX03-2	3/16" x 1/4"	.1875" (3/16)	.2500" (1/4)	.0938" (3/32)	.1250" (1/8)	12.0000" (12)
PREFIX04-2	1/4" x 5/16"	.2500" (1/4)	.3125" (5/16)	.1250" (1/8)	.1250" (1/8)	12.0000" (12)
PREFIX05-2	1/4" x 3/8"	.2500" (1/4)	.3750" (3/8)	.1250" (1/8)	.1250" (1/8)	12.0000" (12)
PREFIX06-2	1/4" x 3/8"	.2500" (1/4)	.3750" (3/8)	.1250" (1/8)	.1875" (3/16)	12.0000" (12)
PREFIX09-2	3/8" x 7/16"	.3750" (3/8)	.4375" (7/16)	.1875" (3/16)	.1563" (5/32)	12.0000" (12)
PREFIX10-2	3/8" x 1/2"	.3750" (3/8)	.5000" (1/2)	.1875" (3/16)	.1875" (3/16)	12.0000" (12)
PREFIX11-2	3/8" x 1/2"	.3750" (3/8)	.5000" (1/2)	.1875" (3/16)	.2500" (1/4)	12.0000" (12)
PREFIX13-2	1/2" x 9/16"	.5000" (1/2)	.5625" (9/16)	.2500" (1/4)	.1875" (3/16)	12.0000" (12)
PREFIX14-2	1/2" x 5/8"	.5000" (1/2)	.6250" (5/8)	.2500" (1/4)	.1875" (3/16)	12.0000" (12)
PREFIX15-2	1/2" x 5/8"	.5000" (1/2)	.6250" (5/8)	.2500" (1/4)	.3125" (5/16)	12.0000" (12)
PREFIX16-2	1/2" x 11/16"	.5000" (1/2)	.6875" (11/16)	.2500" (1/4)	.2500" (1/4)	12.0000" (12)
PREFIX18-2	5/8" x 11/16"	.6250" (5/8)	.6875" (11/16)	.3125" (5/16)	.2500" (1/4)	12.0000" (12)
PREFIX23-2	3/4" x 13/16"	.7500" (3/4)	.8125" (13/16)	.3750" (3/8)	.2813" (9/32)	12.0000" (12)
PREFIX24-2	3/4" x 7/8"	.7500" (3/4)	.8750" (7/8)	.3750" (3/8)	.4375" (7/16)	12.0000" (12)
PREFIX25-2	3/4" x 15/16"	.7500" (3/4)	.9375" (15/16)	.3750" (3/8)	.3125" (5/16)	12.0000" (12)
PREFIX26-2	3/4" x 1"	.7500" (3/4)	1.0000" (1)	.3750" (3/8)	.5000" (1/2)	12.0000" (12)

TO ORDER, REPLACE PREFIX WITH YOUR CHOICE:

SK • SKO • SKS



OFFSET KEY STOCK

Unlike step key stock, offset key stock is machined with inverse steps on opposing faces. Huyett can make custom offset key stock, but does not offer it as an off-the-shelf part. Contact engineering support@huyett.com.



HOW TO READ A PART NUMBER

Step key stock comes in standard height x width combinations. Find the part number in the charts.



ZINC PLATING AND OTHER FINISHES AVAILABLE FOR ALL PARTS

SEE PAGE 16